



ESC Code: 010478

Higher, Further, Faster

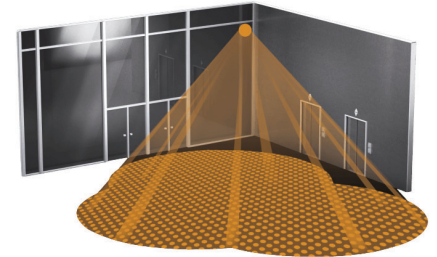
Infrared motion detector IS 3360 is perfect for watching over large areas, such as multi-storey and underground car parks. Mounts at 4m with a 360° angle of coverage and a reach 20m max. (tangential). Available either in round or square surface-mounted and concealed version.

Scan Here



Ideal Application:

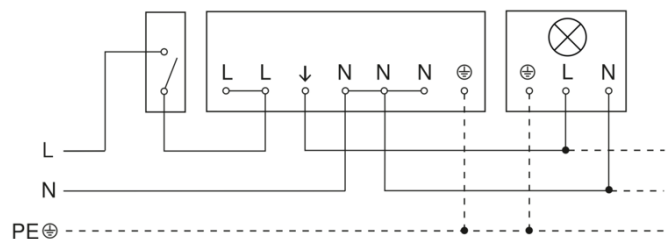
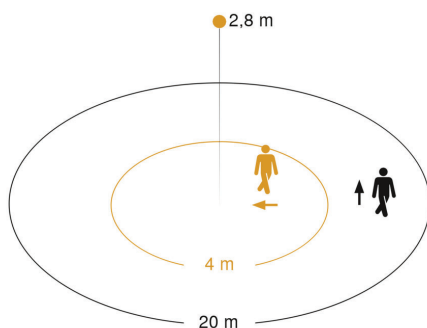
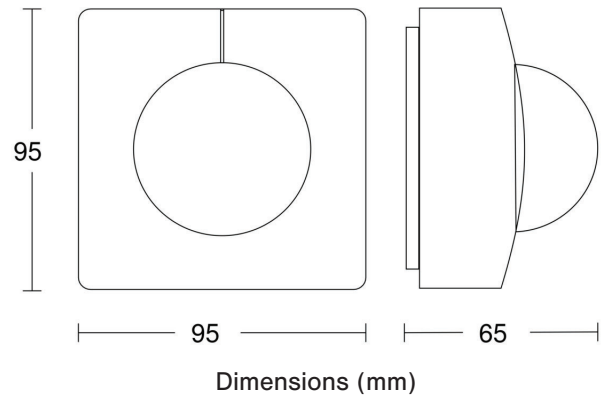
- Warehouse
- Recreation Room
- Underground Carpark
- Indoors and Outdoors



Dimensions (mm)	65 x 95 x 95
Detection Area	Open Area - Low Ceilings
IP Rating	IP54
Max. Reach	20m Radius
Delay Time	5 Sec - 15 Min
Mounting Height	2.5 - 4.0m
Light Level Settings	2 - 1000 lx
Mounting	Surface Mount
Warranty	5 Years
Settings	Manually / Smart Remote
Technology	Passive Infrared

Max. Load on Switched Relay Output (L')	
GLS	2000W
LED	600W

Types Available: Dali, Dali Plus, Dali2, KNX



Master Circuit Diagram



Infrared Sensor 360°



Max. 20m

2000w

2000 W Max



IP54



2 - 1000 lux



5 Sec - 15 Min



Manual Override



Ideal 2.5 - 4m

TEACH

Teach Mode



Energy Saving